



Proyecto Fortalecimiento económico y comercial de las vocaciones productivas artesanales del departamento de Caldas

[Presentación de muestra de productos artesanales con aplicación de principios de diseño contemporáneo]

Fashion Snoops

Ejecutor
Fundación Actuar Microempresas

María Gabriela Corradine Mora
Profesional de Gestión - Supervisora y Coordinadora
Artesanías de Colombia S.A.

Manizales, Artesanías de Colombia S.A., 2015



Equipo Ejecutor

Alejandro Agudelo Holguín - Enlace Caldas
Paola Andrea Sánchez A - Monitora Laboratorio de Caldas
Yolanda del Pilar Robayo P - Coordinadora
Pablo Renato Gutiérrez - Emprendimiento
Laura Paola Bautista - Promotora de Ventas
María Paz Jaramillo - Diseñadora textil
Luz Paola Díaz Valencia - Mercadeo
Fundación Juan Pablo Socarras Yaní - Diseñador de Modas
Jairo Francisco Saavedra - Experto textil
Jairo Barbosa - Asesor en Joyería
Luis Alberto Bedoya M. - Costos
Andrea Marín Salazar - Comercialización
Eduard Felipe López - Diseñador Industrial
Andrea Marín Salazar - Asesora Comercial
Iván David Hernández – Abogado Propiedad Intelectual
Jennifer Hernández - Auxiliar Administrativa Oficina Barrio Amigo
Alba Lucía López – Trabajadora Social
Beatriz Elena Villada Quintero - Auxiliar Administrativa Punto de Venta
Herman Obed Muñoz Arias - Vendedor Punto de Venta
Jacqueline Arango - Auxiliar Administrativa Punto de Venta



Créditos Institucionales

Artesanías de Colombia S.A

Ana María Frías Martínez – Gerente General

Diana Pombo Holguín - Subgerente de Desarrollo y Fortalecimiento del Sector Artesanal

María Gabriela Corradine Mora - Profesional de Gestión - Supervisora y Coordinadora

Gobernación de Caldas

Julián Gutiérrez Botero - Gobernador de Caldas

Patricia del Pilar Ruíz Vera - Secretaria de Desarrollo Económico

Jorge Andrés Gómez Escudero - Secretario de Gobierno

Martín Augusto Durán Céspedes - Secretario Integración y Desarrollo Social

José Bernardo González Betancurth - Secretario Cultura

Elisabeth Pinilla – Supervisora Secretaria de Gobierno

María Clemencia Montoya - Supervisora Secretaria de Cultura

John Emil Muñoz - Supervisor Secretaria de Desarrollo Económico

Dora Constanza Cardona - Supervisora Secretaría de Integración y Desarrollo Social

Alcaldía de Manizales

Jorge Eduardo Rojas Giraldo - Alcalde

Claudia Marcela Chica Valencia - Secretaria de Desarrollo Económico

María Carmenza Bermúdez- Supervisora Secretaria de Desarrollo Económico

Actuar Microempresas

Pedro Felipe Sogamoso Cardona - Director Ejecutivo

Carlos Alberto Vergara Salazar - Director Financiero y Administrativo

Laura Victoria Loaiza Londoño - Auxiliar Asistente administrativo y financiero



JOYERÍA ACCESORIOS 2015-16

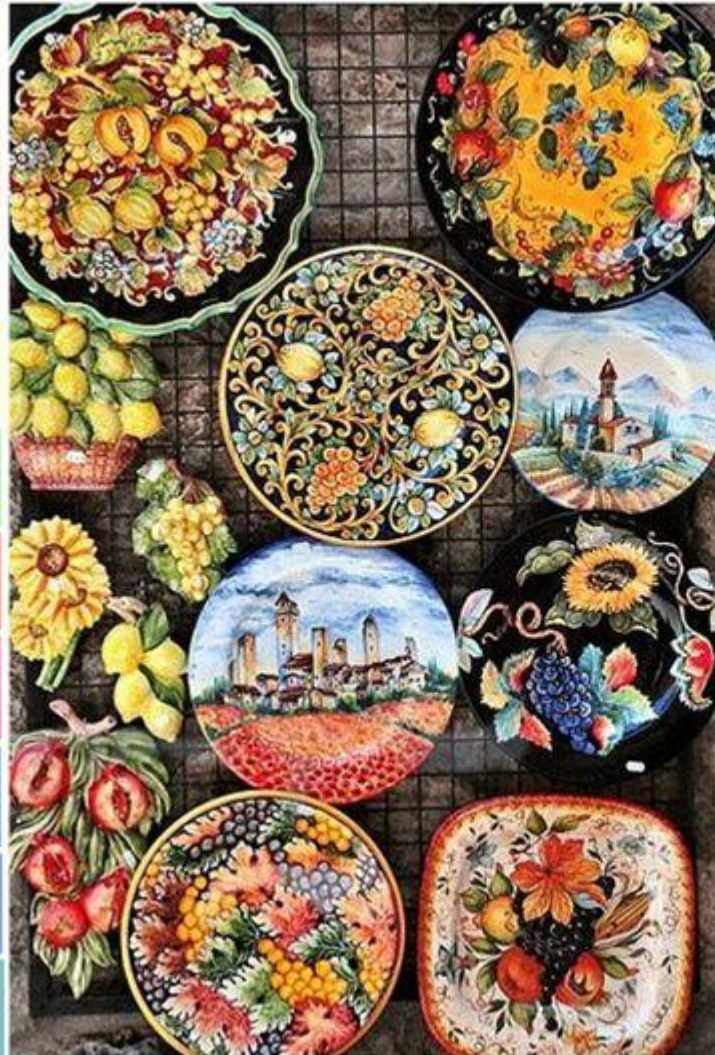
FASHION
SNOOPS

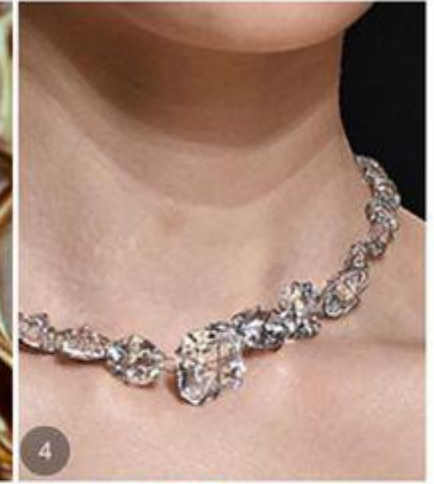
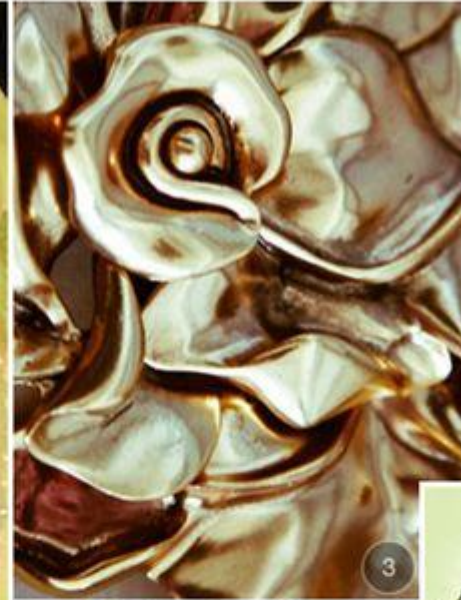
FASHION SNOOPS

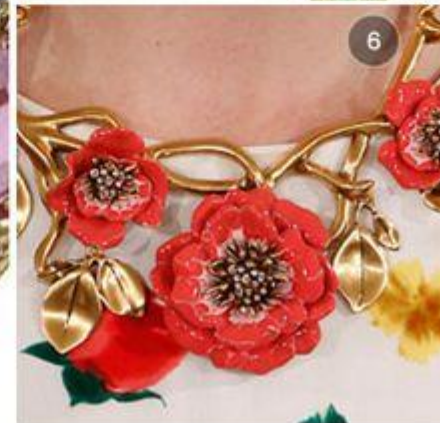
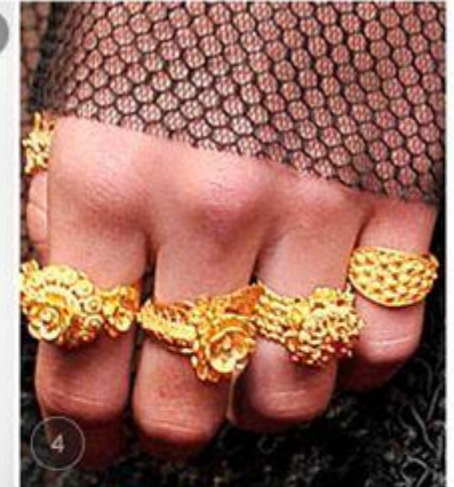


MOOD

CARPE DIEM







CARPE DIEM

S/S 16 STYLE GUIDE



- 11-0701
- 13-1404
- 16-1543
- 14-0760
- 16-6340
- 18-1561
- 18-1945
- 18-4043
- 15-3930
- 14--4811



KEY ITEMS

STYLING

Carpe Diem inspires us to seize the day and enjoy life's pleasures. The story showcases a wide range of vibrant colors, drawing inspiration from the colorful Italian Riviera. The Carpe Diem woman is a classic Mediterranean beauty who is confident, seductive and lavish while her vibrant surroundings inspire her to infuse that very same lively aesthetic into the jewelry and accessories that she wears. Precious gold is a must-have in her jewelry box, multi-color gemstones bib necklace draped elegantly from her neck while traditional dark intaglios are paired with gold and pearls. Riviera blues inspires the different shades of Opals while floral motifs and pavé details keep styles ultra feminine. She expresses her boldness with signature looks that convey a retro charm while embodying the passionate nature of her Mediterranean culture with adoration for love and utmost appreciation for life.

SKETCH



Gold



Lacquer Coated Metal



Multi-color Gemstones



Intaglio



Carved Coral



Opal & Multi-color Encrusted Details

PARIS
HAUTE COUTURE
SPRING/SUMMER 15
JEWELRY
HIGHLIGHTS



VERSACE

STATEMENT RING SET



SCHIAPPARELLI

STAR CUFF



ARMANI PRIVE

STATEMENT HOOPS



VERSACE

CRYSTALLIZED OPEN CHOKER

PARIS HAUTE COUTURE SPRING/SUMMER 15 BRACELET HIGHLIGHTS



SCHIAPPARELLI
PAVE CHAIN LINKS



SCHIAPPARELLI
STAR CUFF



ARMANI PRIVE
TWO-TONED LUCITE



ELIE SAAB
BOTANICAL PALM HARNESS

BRACELET

**PARIS
HAUTE COUTURE
SPRING/SUMMER 15
BRACELET
HIGHLIGHTS**



ARMANI PRIVE
ENCRUSTED END CUFF



JULIEN FOURNIE
STACKABLE



SCHIAPPARELLI
OVERSIZED CHARMS



ARMANI PRIVE
FLATTENED BANGLE STACK

BRACELET

PARIS
HAUTE COUTURE
SPRING/SUMMER 15
EARRING
HIGHLIGHTS



JEAN PAUL GAULTIER

BRASS CONE



VERSACE

PAVE CRYSTALS



ELIE SAAB

COLORLED PEARLS



ALEXANDRE VAUTHIER

SINGLE EARRING

EARRINGS

PARIS HAUTE COUTURE SPRING/SUMMER 15 NECKLACE HIGHLIGHTS



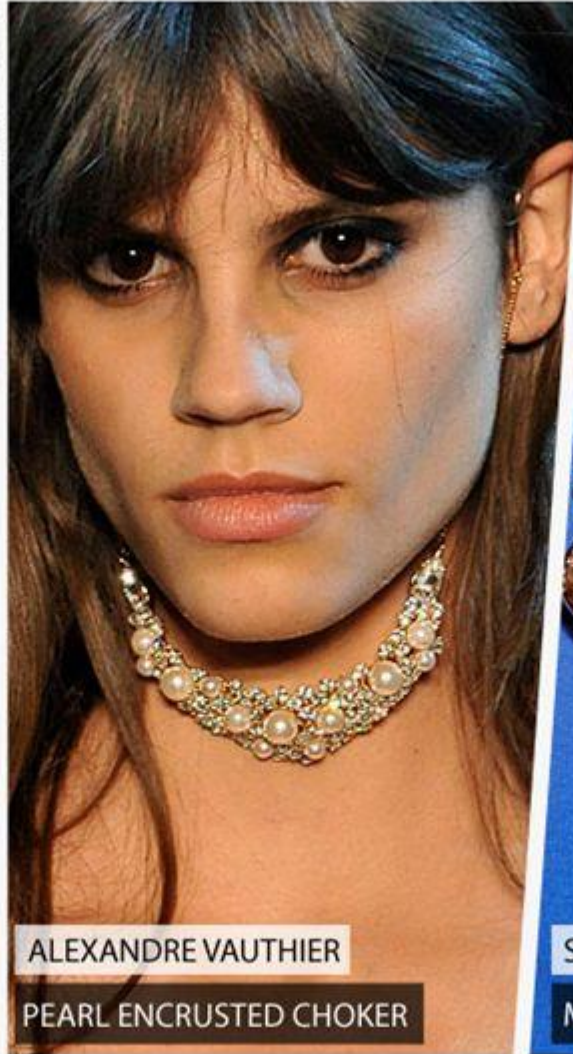
JEAN PAUL GAULTIER

CHAIN COLLAR



SCHIAPPARELLI

SEMI-PRECIOUS STONES



ALEXANDRE VAUTHIER

PEARL ENCRUSTED CHOKER



SCHIAPPARELLI

MIRROR PENDANTS

NECKLACE

FASHION
SNOOPS

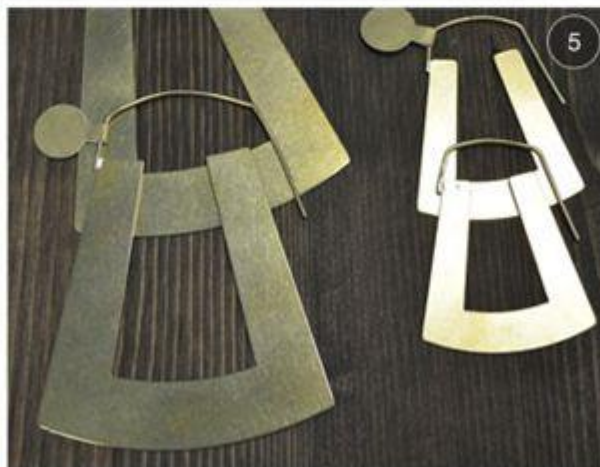
50 años
artesanías de colombia



SWAROVSKI X MISFIT SHINE

HOT NOW

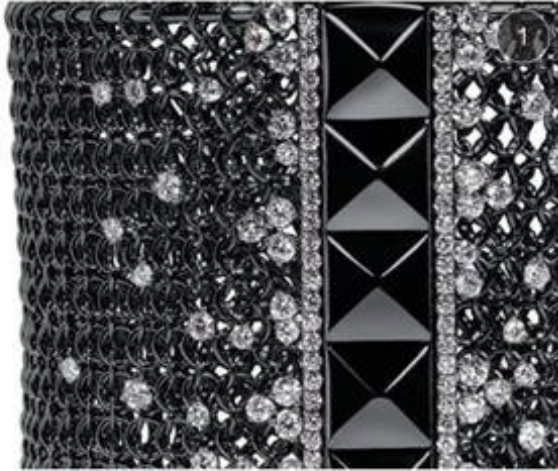




TOP MATERIALS

1. Silk
2. Sterling silver
3. Resin

4. Brass
5. Yellow gold
6. Recycled metals



TOP KEY MATERIALS

1. Gunmetal Plated metal

2. Rose Gold

3. Fine-Woven Leather

4. Yellow Gold

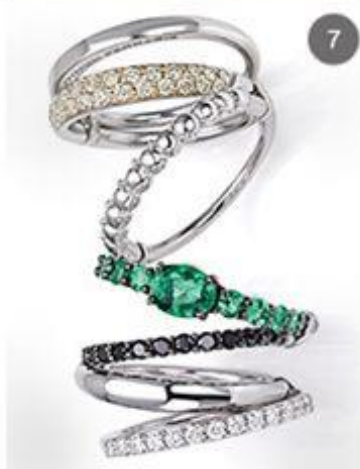
5. White Gold

6. Titanium Plated metal



TOP KEY ITEMS

- | | |
|-----------------------|-----------------------|
| 1. Neck Ring | 4. Embellished Bangle |
| 2. Open Choker | 5. Statement Cuff |
| 3. Statement Necklace | 6. Stackable Rings |



TOP KEY ITEMS

1. Collar
2. Ear cuffs
3. Statement Cuff
4. Layered necklaces

5. Statement Earrings
6. Brooch
7. Stackable Rings

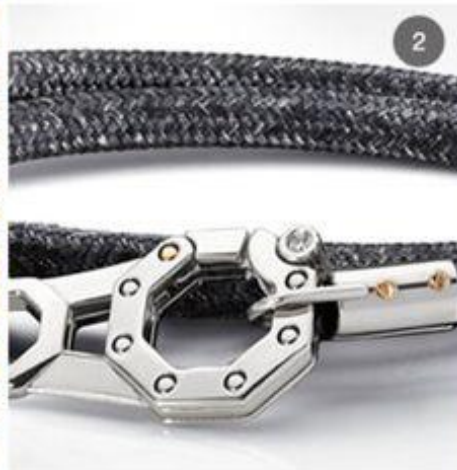
8. Statement Bib Necklace
9. Cocktail ring
10. Flexible Bangles



TOP KEY DETAILS

1. Realistic Details
2. Acrylic Paint Effect
3. Encrusted Motif
4. Corded

5. Mixed Medias
6. Inverted Crystals
7. Strategic Placement
8. Whimsical Charms



TOP KEY DETAILS

1. Pave Crystals
2. Utility Details
3. Mixed Elements
4. Twist Silhouette
5. Beads & Gemstone Charms
6. Multicolored Gemstones
7. Negative Space
8. Encrusted Mesh



TOP TRENDS

BONES



TOP TRENDS

ART DECO



TOP TRENDS

ARCHITECTURAL



TOP TRENDS

NOSTALGIC



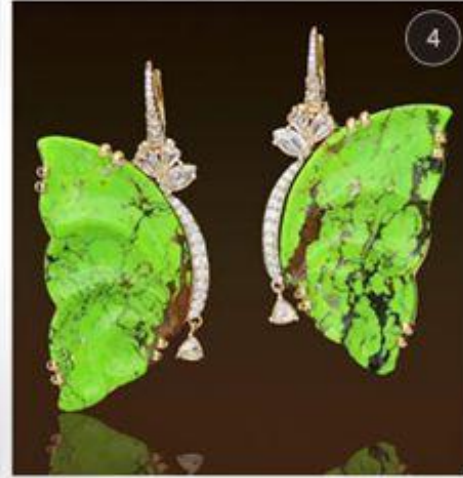
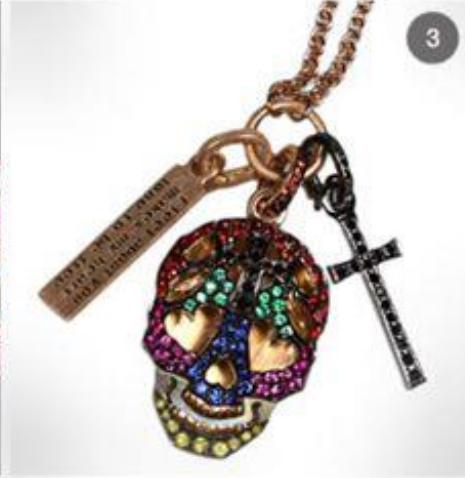
TOP TRENDS

FOUND OBJECTS



TOP TRENDS

NATURE INSPIRED



TOP KEY TRENDS

1.Celestial
2.Dark Botanical
3.Skulls

4.Butterfly
5.Utilitarian
6.Regal
7.Glam Rock



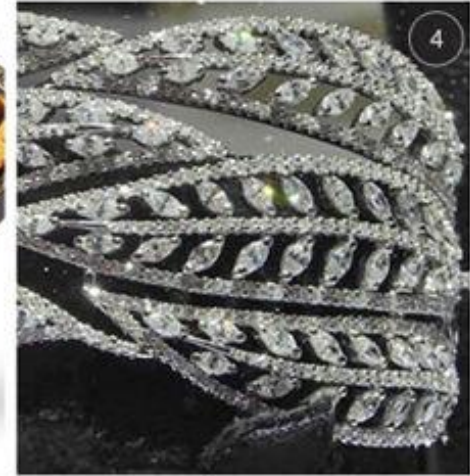
1



2



3



4



5



6



7



8

TOP KEY GEMSTONES

1. Rose Quartz
2. Milky Quartz
3. Smoky Quartz
4. Diamond

5. Opal
6. Black Pearls & Emerald

7. Green Turquoise
8. Rues & Black Diamond



EXHIBITORS - Bel and Skar | Capsule



EXHIBITORS Carolyn Colby | Capsule



EXHIBITORS Ivi Jewelry | Capsule



EXHIBITORS Kria Jewelry | Capsule



EXHIBITORS Macha | Capsule



EXHIBITORS Marmol Radziner Jewelry | Capsule



EXHIBITORS Seaworthy | Capsule



EXHIBITORS Seaworthy | Capsule



Chimento | Vicenzaoro





Crivelli | Vicenzaoro





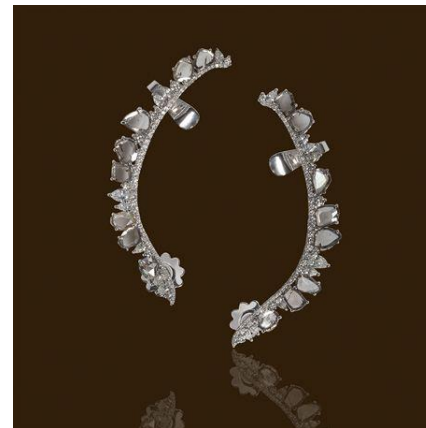
Fope | Vicenzaoro



Giovanni Ferraris | Vicenzaoro



J Jewels | Vicenzaoro





LeVian | Vicenzaoro







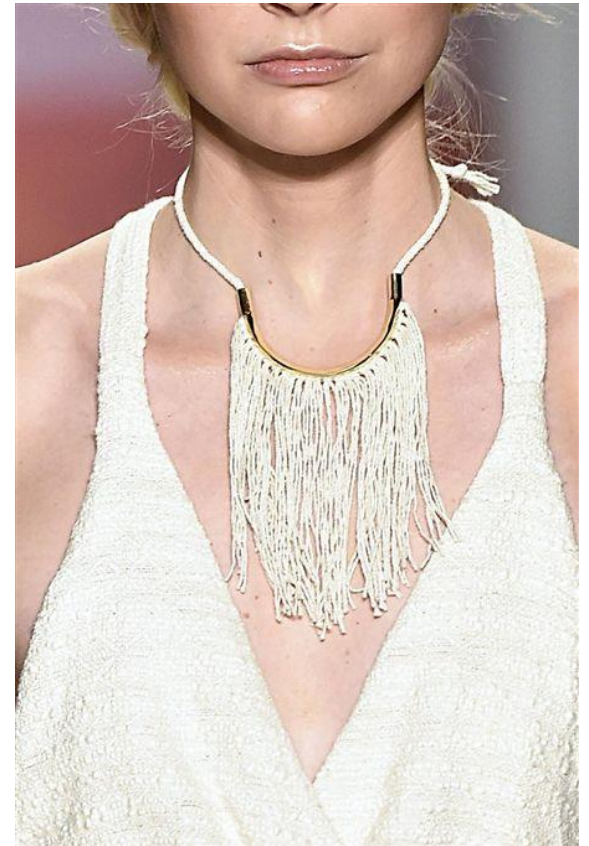
Piero Milano | Vicenzaoro



Giovanni Ferraris | Vicenzaoro

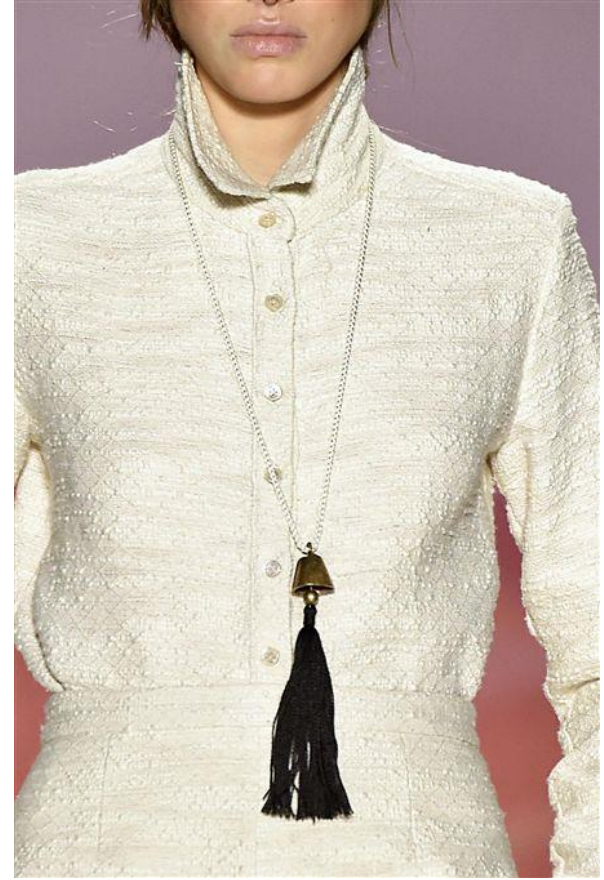


Tous | Vicenzaoro

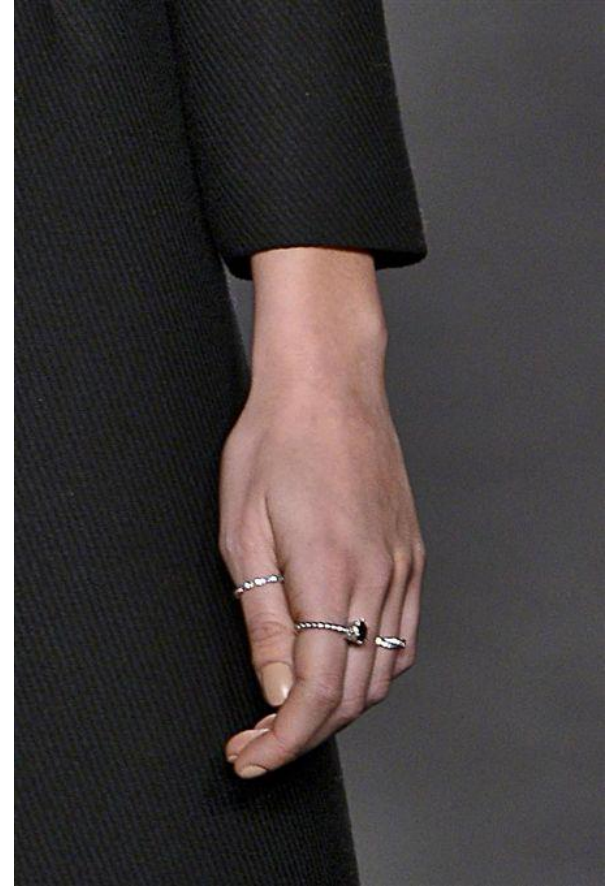




FASHION SNOOPS



FASHION SNOOPS



FASHION SNOOPS



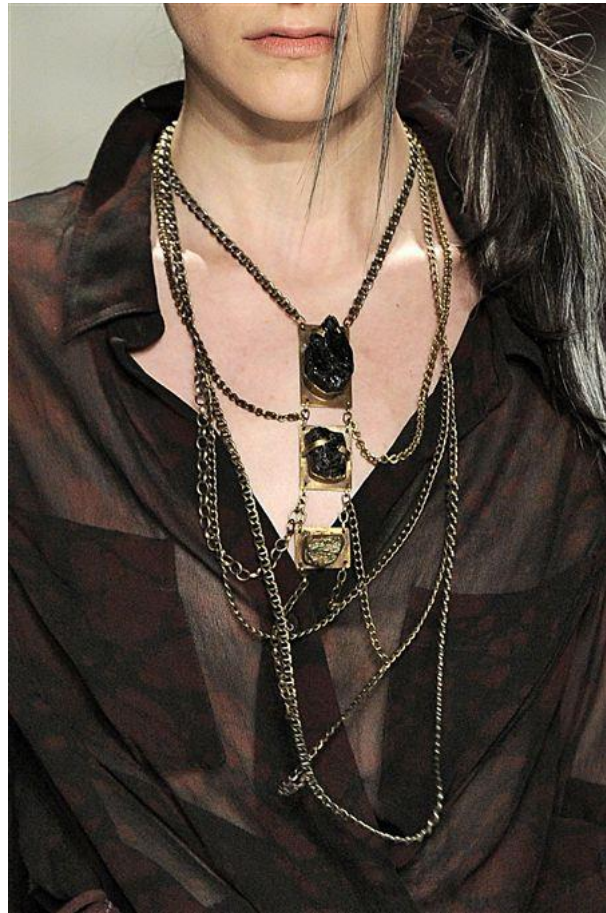
FASHION SNOOPS



FASHION SNOOPS



FASHION SNOOPS





JOYERÍA ACCESORIOS 2015-16