



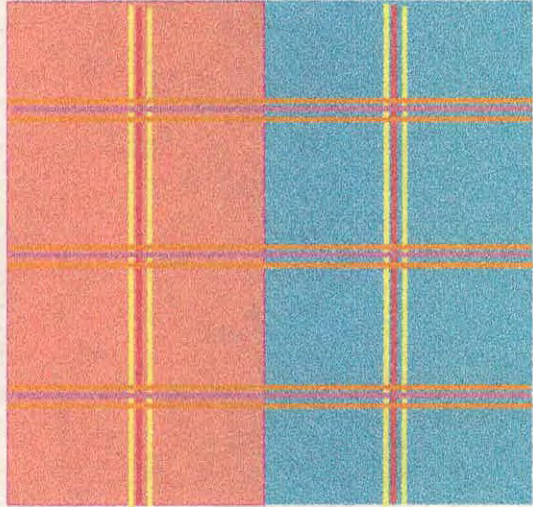
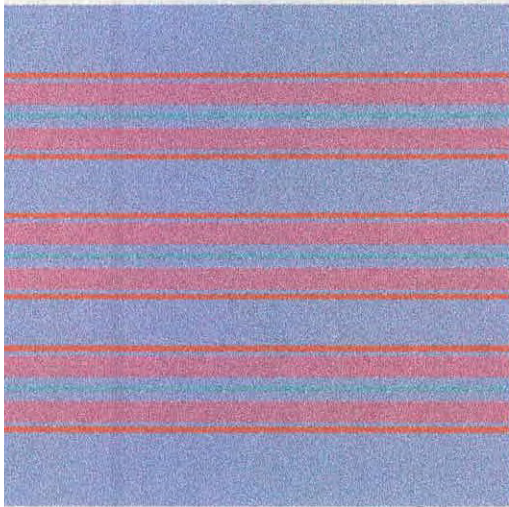
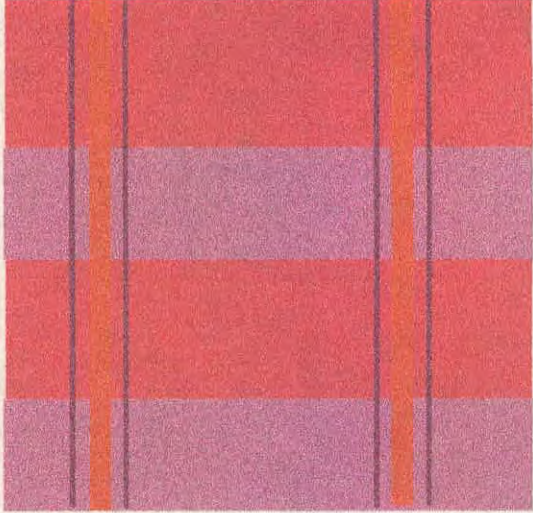
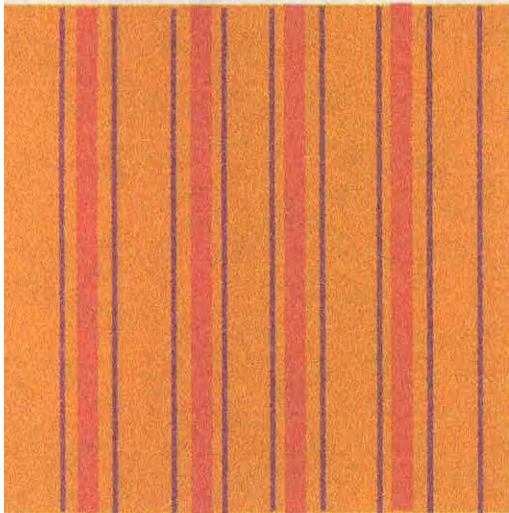
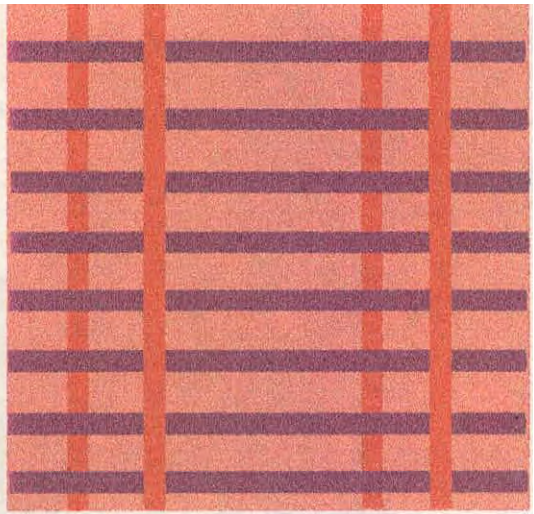
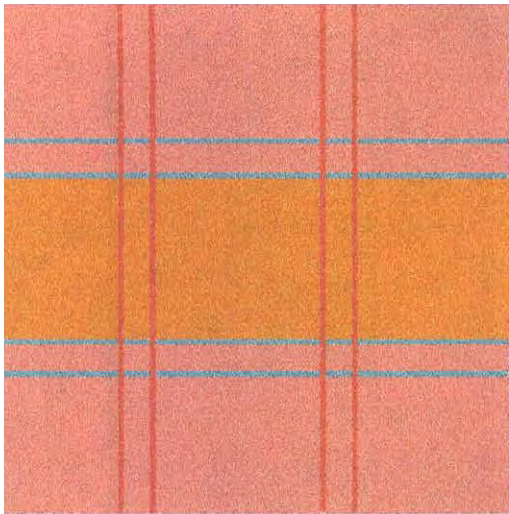
MINISTERIO DE DESARROLLO ECONOMICO
ARTESANIAS DE COLOMBIA S.A.

Variaciones de diseño y color para telas y cobijas de Cucunubá - Cundinamarca y cojines de San Vicente - Antioquia

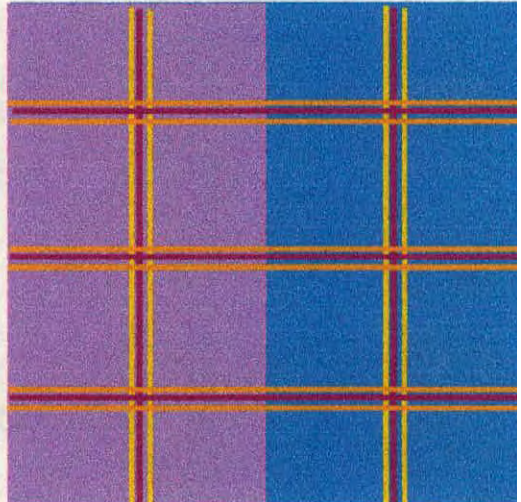
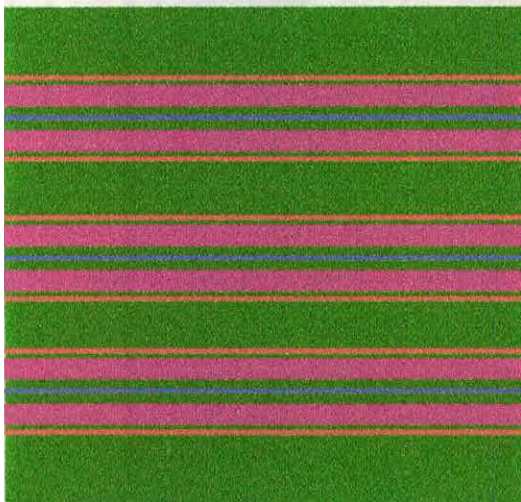
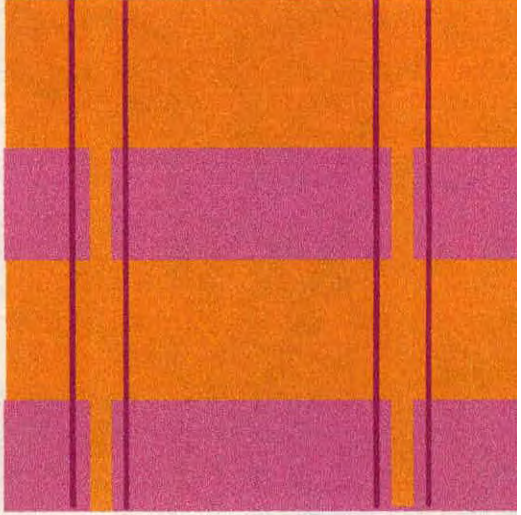
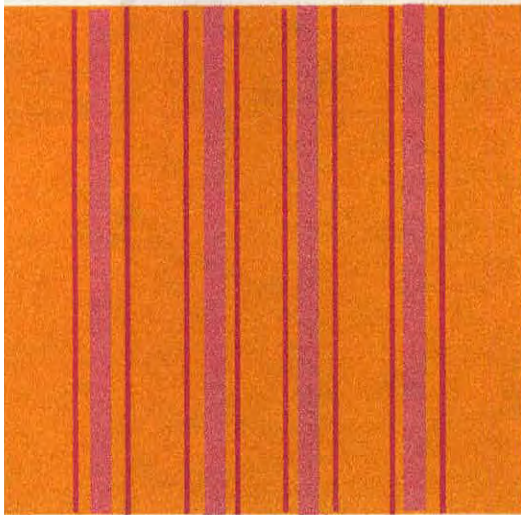
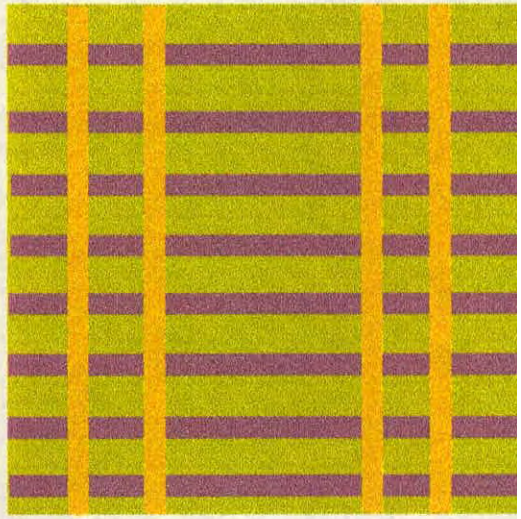
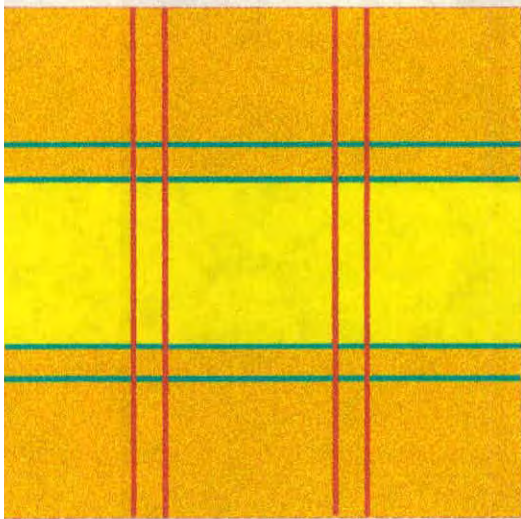
Diana Franco
Diseñadora Textil

Santafé de Bogotá D.C., Agosto de 1999

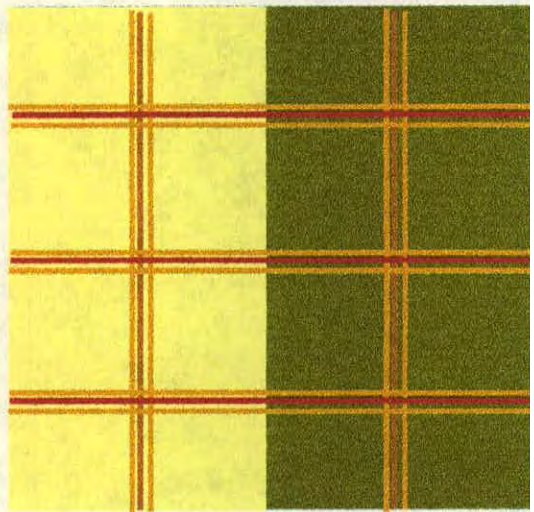
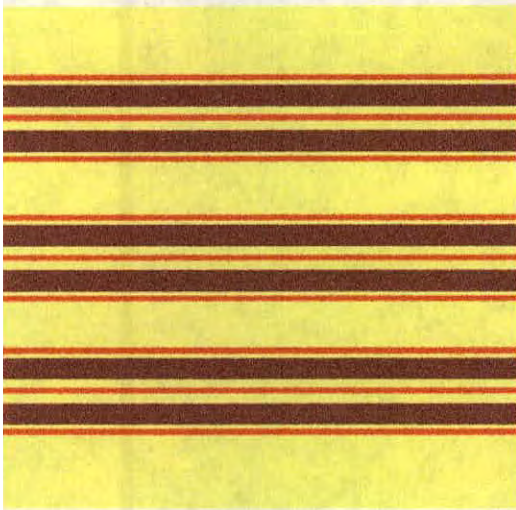
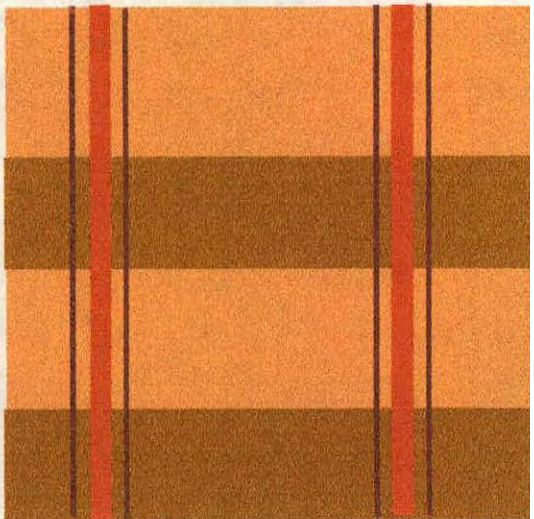
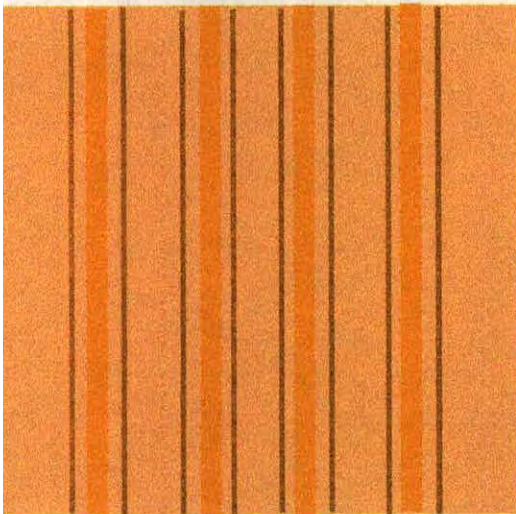
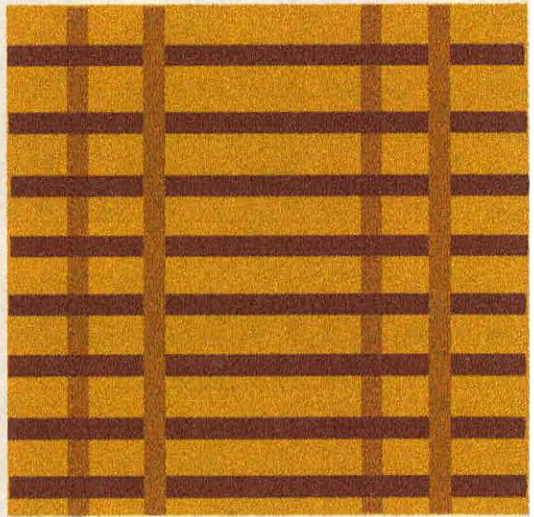
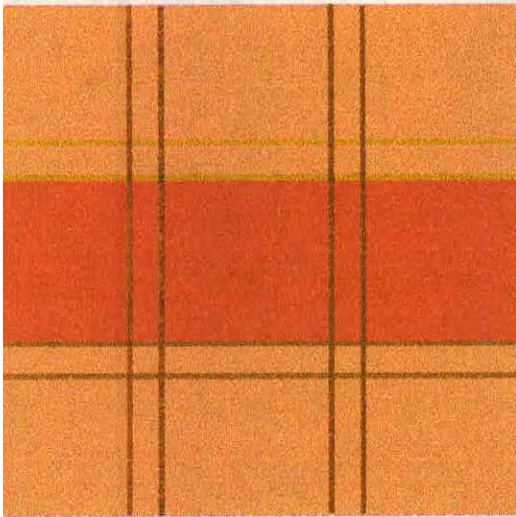
Colores Pasteles



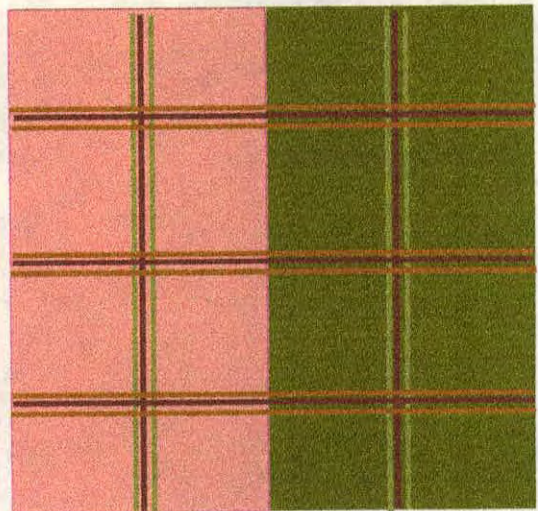
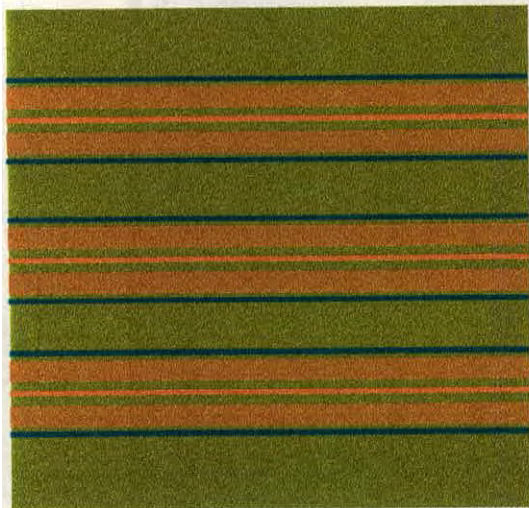
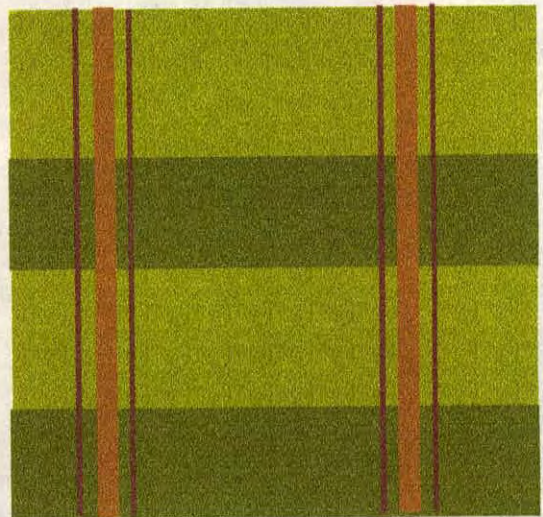
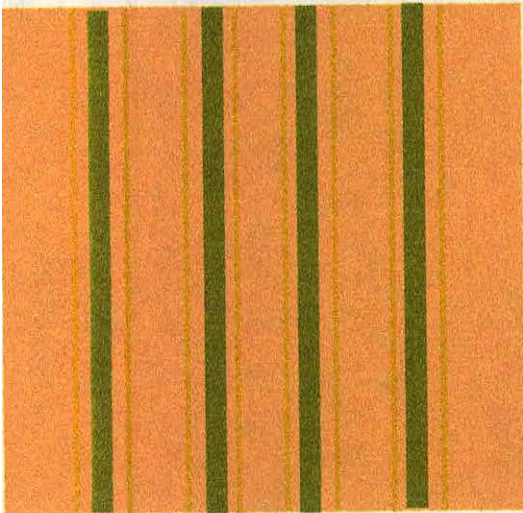
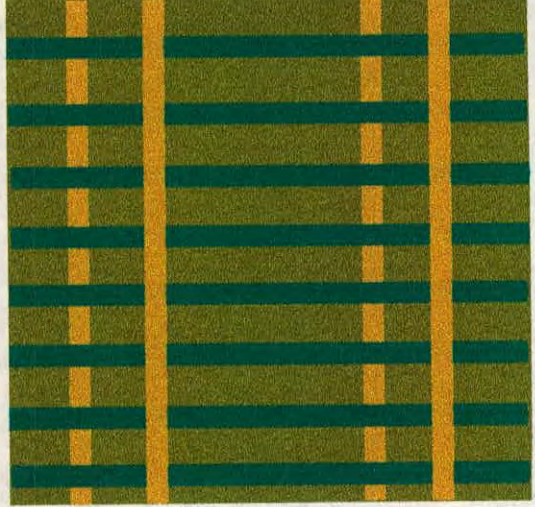
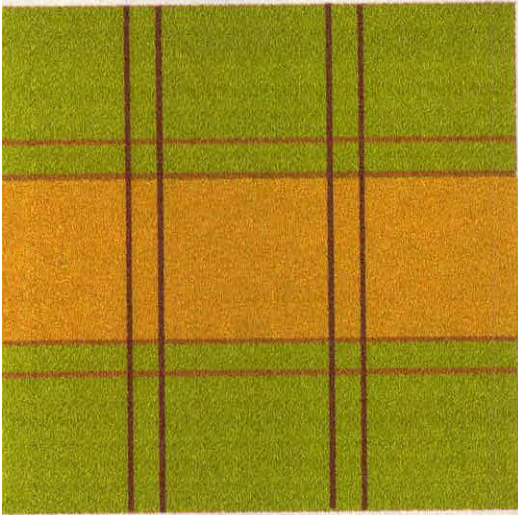
Colores Fuertes



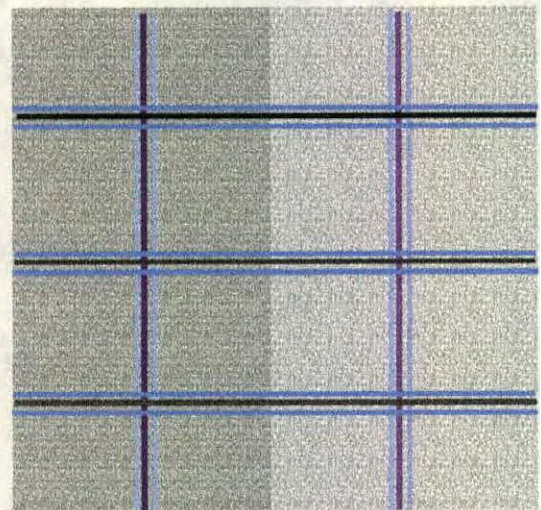
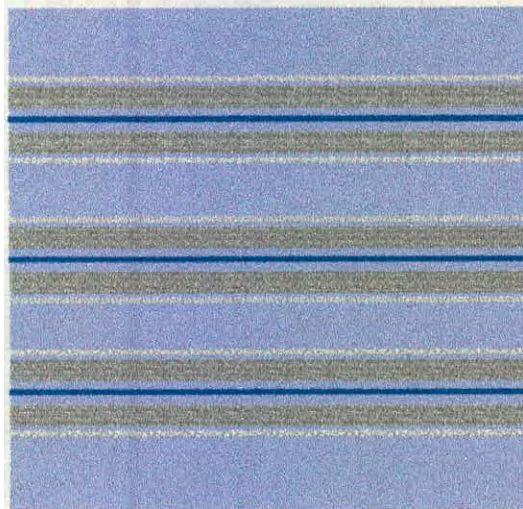
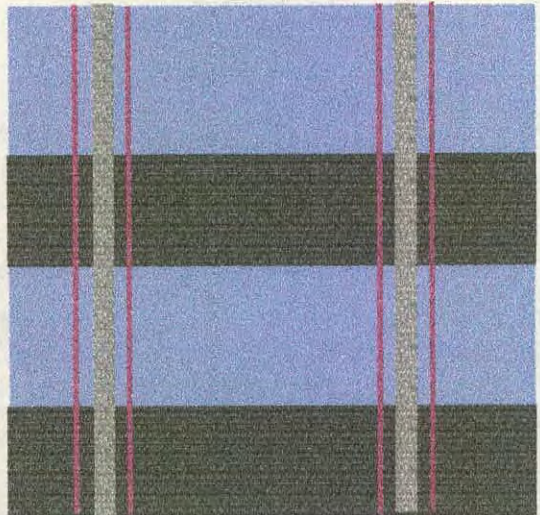
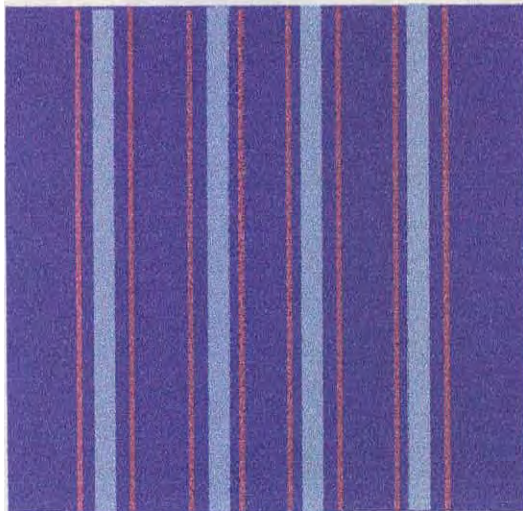
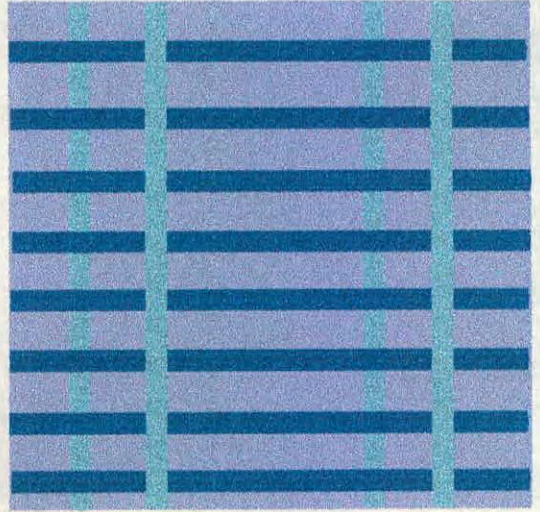
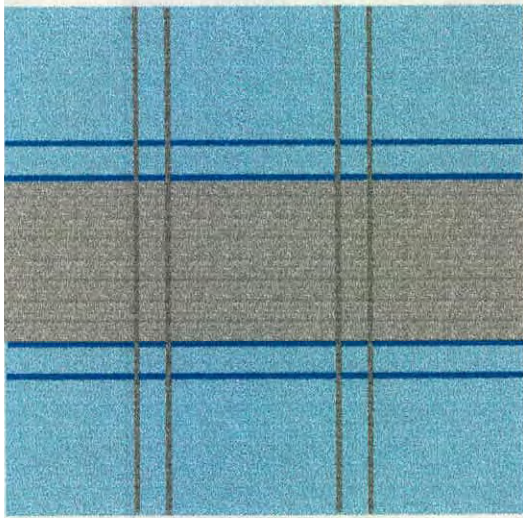
Colores Tierra



Colores Naturaleza

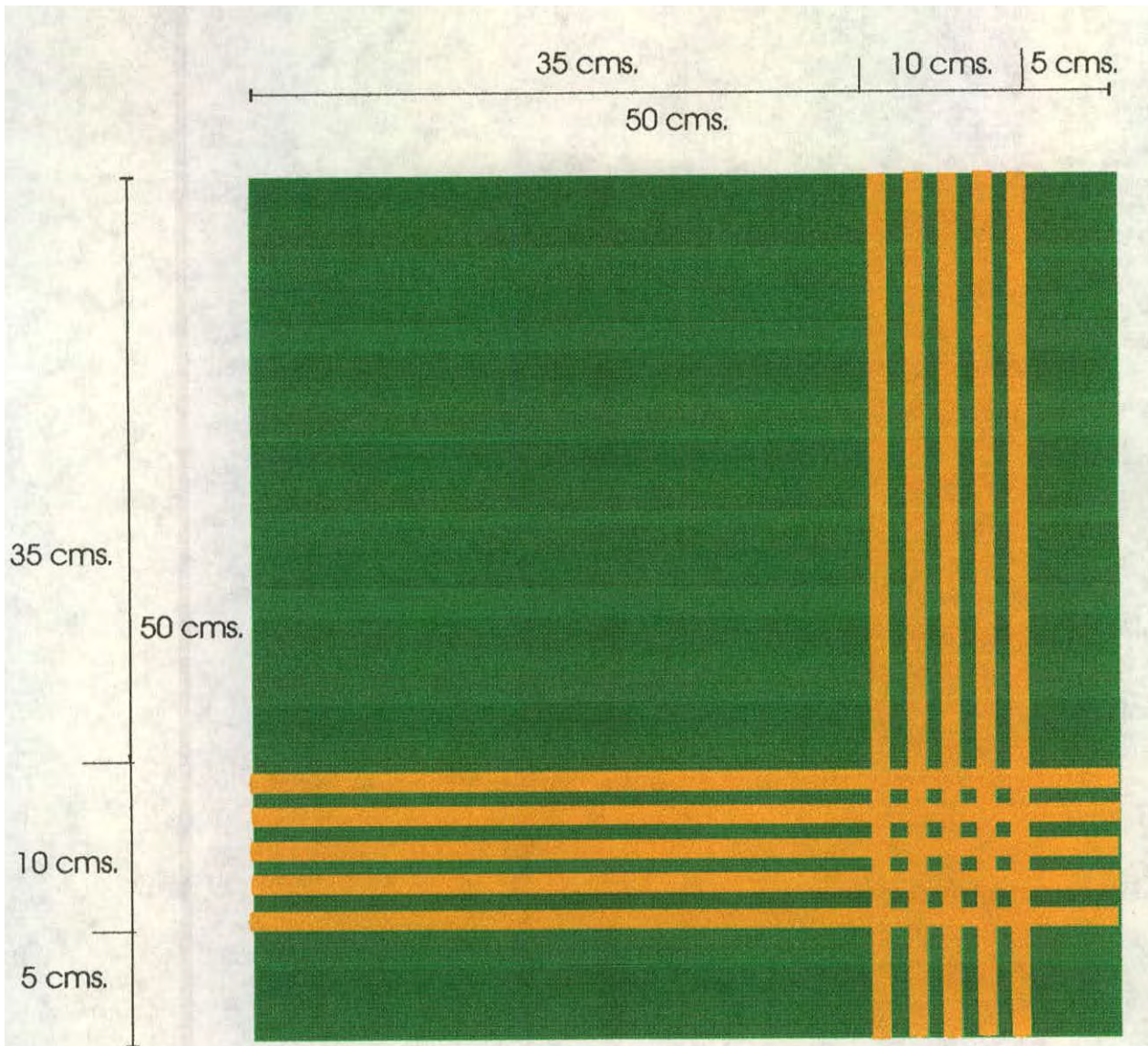


Colores Cielo



DISEÑOS PARA SAN VICENTE DE ANTIOQUIA

COJINES

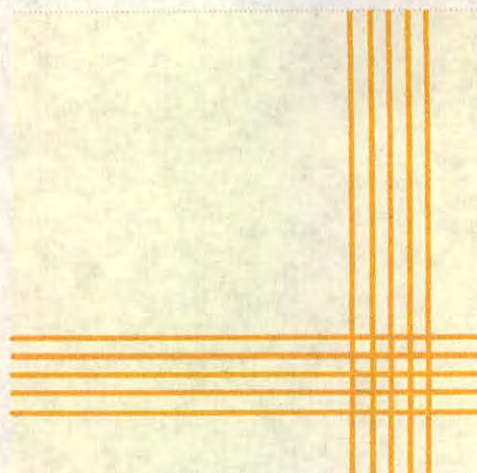
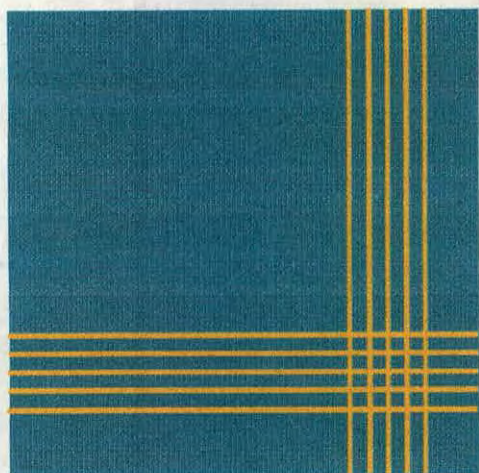
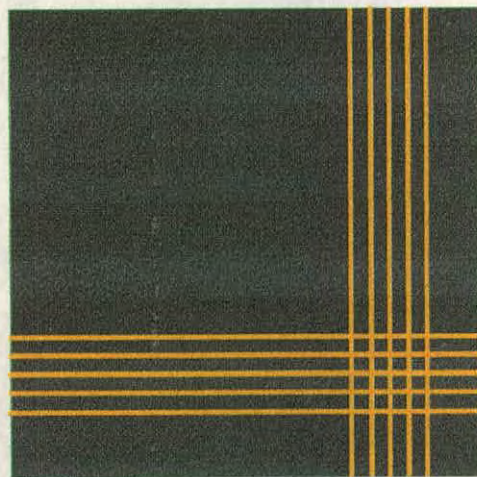
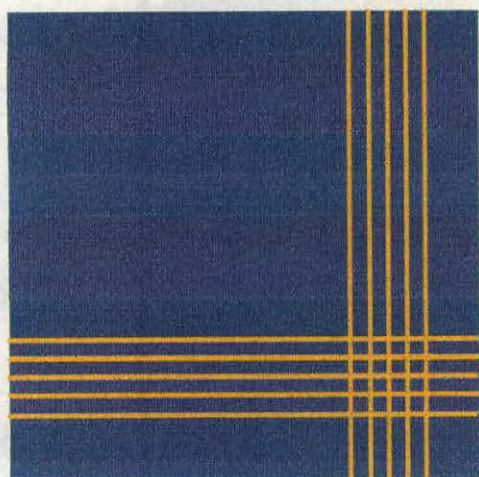
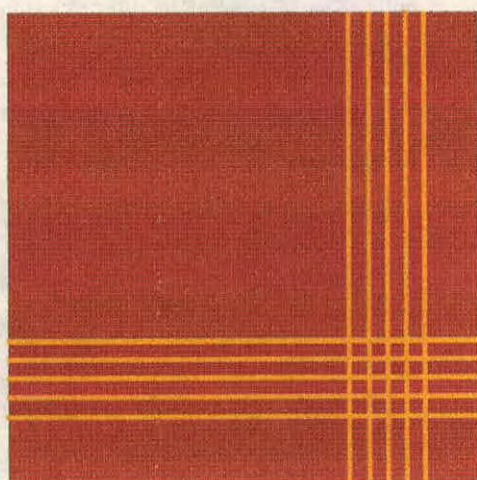
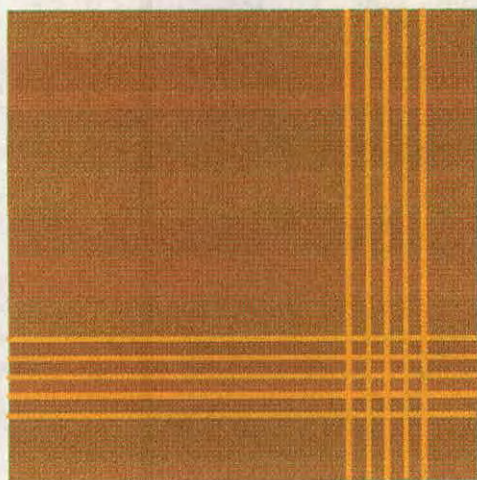


Urdimbre verde y amarilla, a franjas, con trama verde y amarilla.

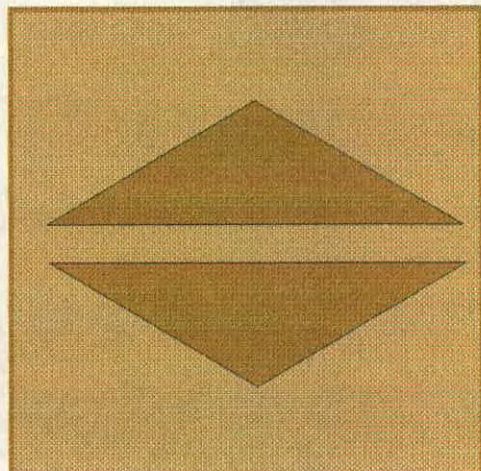
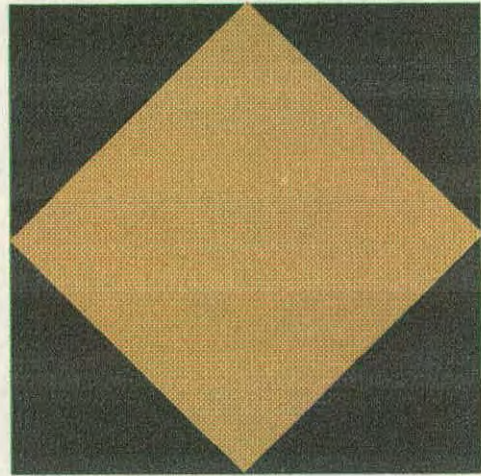
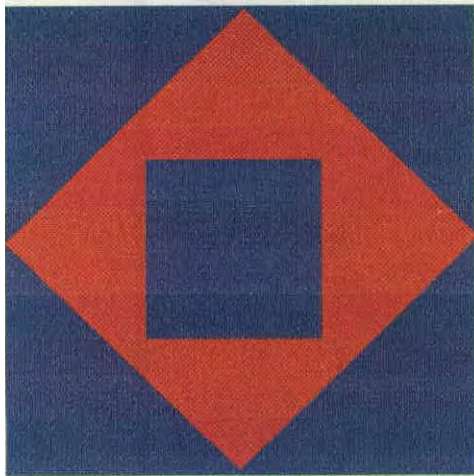
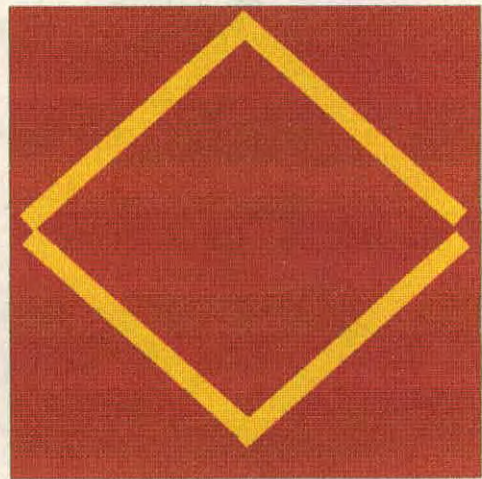
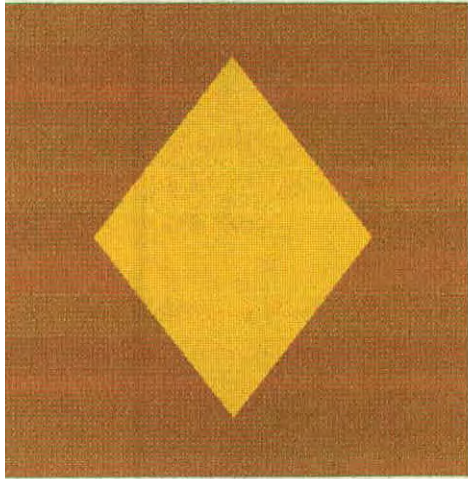
Esc. 1:4.

Las dimensiones pueden variar. El cojín puede medir como mínimo 35 cms, y como máximo 70 cms.

VARIACIONES DE COLOR



VARIACIONES DE DISEÑOS



VARIACIONES DE DISEÑOS

